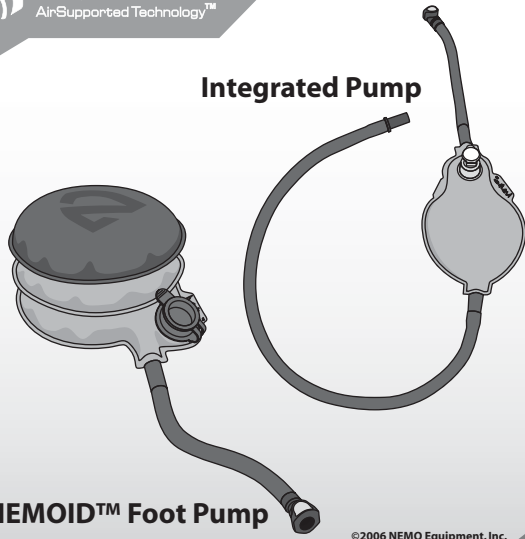


NEMO Pump Manual

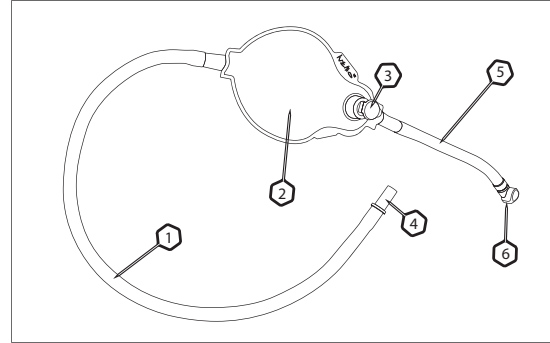
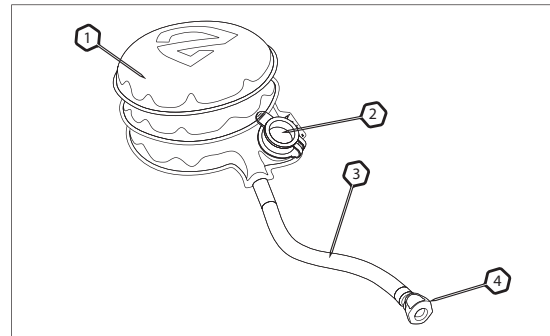


Integrated Pump



NEMOID™ Foot Pump

©2006 NEMO Equipment, Inc.



OVERVIEW

Nemoid™ Foot Pump

1. NEMOID™ Foot Pump Body
2. Dump Check Valve™
3. Neoprene hose
4. Quick-Disconnect Fitting

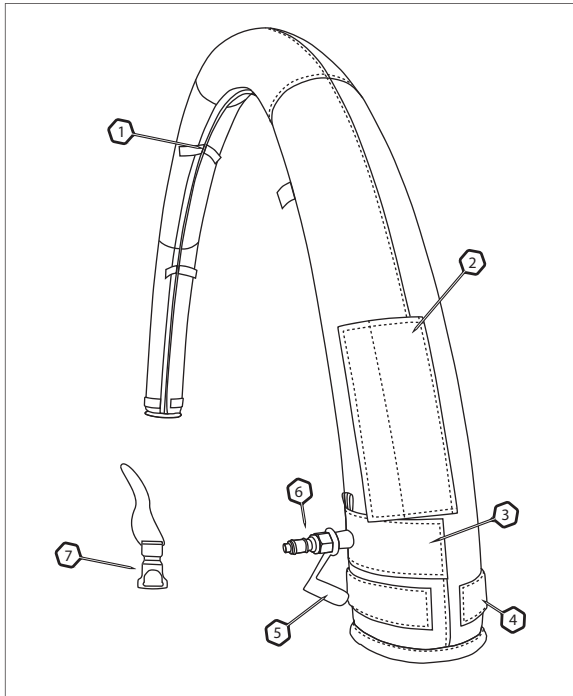
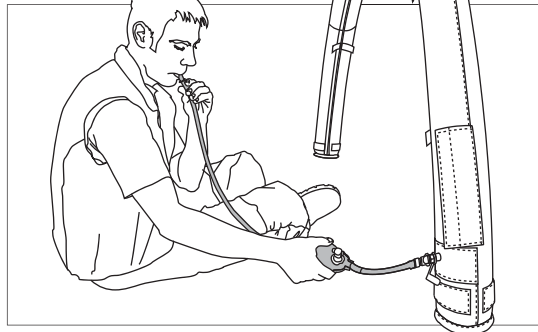
Integrated Pump

1. Neoprene Hose
2. Integrated Pump Body
3. Optional Input / Moisture Release Valve
4. Mouthpiece
5. Neoprene Output Hose
6. Quick-Disconnect Fitting

OVERVIEW

Integrated Pump and Airbeam

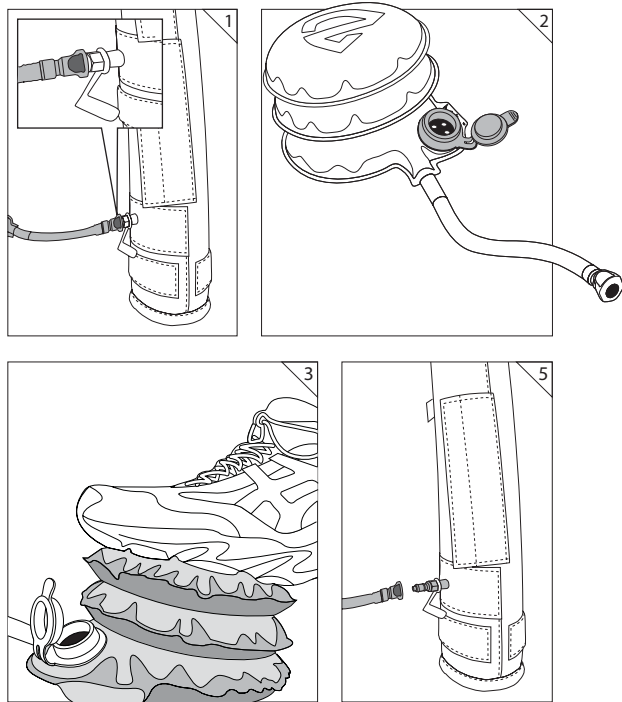
1. Velcro Straps for Attachment Inside Tent Shell
2. Bladder Access Pocket
3. Hypalon® Valve Reinforcement
4. Velcro Panels for Securing Airbeam Ends
5. Protective Cap for Valve
6. Quick-Disconnect Inflate/Deflate Valve
7. Deflator



*Patents Pending



NEMO Equipment, Inc.
 100 Factory Street, Nashua, NH 03060
 Phone/Fax: 1-800-997-9301 / 603-881-9358
 E-mail: journey@nemoequipment.com



NEMOID™ FOOT PUMP

- 1 To inflate a NEMO airbeam, connect the quick-disconnect fitting on the end of your Nemoid™ foot pump to the inflate/deflate valve at the base of the airbeam. When properly connected, there will be an audible click.
- 2 Make sure the red Dump Check Valve™ is open. This will allow air to refill the pump body after every time you step on it.
- 3 Begin applying force to the foot pump by stepping on the pump body; NEMO shield up. If you are pumping from inside the tent, it may be easier to use your knee or hand to apply force.
- 4 When the airbeam is at the correct pressure you will find it very difficult to compress the pump again. AirSupported Technology™ is a low pressure system that runs at about 7 psi for a very rigid and strong tent. The airbeams are strong enough to contain a much higher pressure than will ever be reached with a NEMO pump.
- 5 When the beam is fully inflated, disconnect the quick-disconnect fitting from the airbeam and return the pump to your stuff sack for storage. For compact packing close the red Dump Check Valve™ and compress. However, if you are going to be storing your Nemoid™ foot pump for a prolonged period of time, it should be left uncompressed.

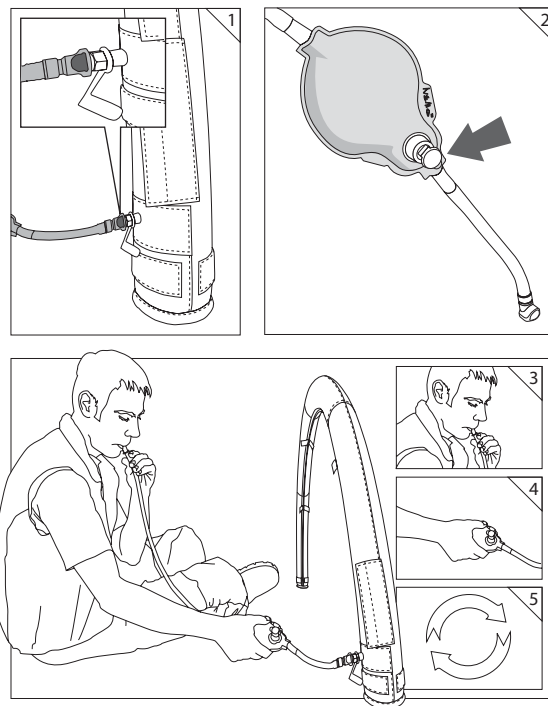
REPAIR

If you have any problems with a NEMO product, please contact Rainy Pass Repair, Inc., the industry leader in outdoor product care for repair or replacement. If you have any questions regarding warranty and repair, or if you need to send a product in for service, please call Rainy Pass. It is not necessary to clean the item before sending, but it will be appreciated if you remove any excessive soiling. Rainy Pass will be happy to give you advice about safely cleaning your product. Please provide the following when you send a NEMO product to Rainy Pass:

- ▢ A note with your name, phone number, address, e-mail and problem description. A repair form can be downloaded at: www.nemoequipment.com/pdf/NEMO_repairform.pdf
- ▢ Please remove all of your personal items and mark all damaged areas on the product with masking tape.
- ▢ Pack the product in a sturdy cardboard box with plenty of room. If possible, use the original box to reduce waste.

Ship to:	To contact Rainy Pass:
Rainy Pass Repair, Inc.	Phone: 1 (888) 747-7867
5307 Roosevelt Way, NE	Email: repair@rainypass.com
Seattle, WA 98105	www.rainypass.com

If you live in the Seattle area, you can call Rainy Pass locally at (206) 523-8135 and visit their shop during the following hours: M,T,W,F 9am-6pm and Th 9am-7pm.



INTEGRATED PUMP

- 1 To inflate a NEMO airbeam with an Integrated Pump, first connect the quick-disconnect fitting on the end of your pump to the inflate/deflate valve at the base of the airbeam. When properly connected, there will be an audible click.
 - 2 Make sure the optional input/moisture release valve is closed. This will allow you to fill the pump body with air.
 - 3 While holding the the pump body with one hand and the mouthpiece to your mouth with the other, blow to inflate the pump body.
 - 4 Squeeze this inflated pouch into the airbeam with your hand. A one-way valve in the pump will prevent the air from coming back out.
 - 5 Repeat the cycle of blowing and squeezing until the airbeam is rigid. After a bit of practice, inflation can become quite quick. Remember to frequently inhale too!
 - 6 When the airbeam is at the correct pressure you will find it very difficult to compress the pump again. Disconnect the quick-disconnect fitting from the airbeam and return the pump to your stuff sack for storage.
- * Be careful not to over-inflate if using a supplementary inflation device through the input valve.

WARRANTY

NEMO guarantees every product we sell. We put a great effort into choosing the best materials and providing you with the highest level of workmanship. If one of our products does not meet your expectations during its useful life, we promise to repair it, replace it, exchange it, or give you a refund at our discretion. NEMO does not warranty products against normal wear and tear, unauthorized modifications or alterations, improper use, improper maintenance, misuse or neglect or if the product is used for a purpose for which it is not intended. Except as expressly set forth in these terms and conditions, NEMO is not liable for any direct, indirect or consequential damages arising out of or resulting from the use of a NEMO product. The warranties set forth in these terms and conditions are in lieu of all other warranties, express or implied, including without limitation, implied warranties of merchantability or fitness for a particular purpose.

! WARNINGS

When using a supplementary pump in combination with the Integrated Pump (i.e. a bike pump) via the optional input/moisture release valve be sure not to overinflate the airbeams.

The one-way check valve on the Integrated Pump can get blocked with saliva. If this happens, give it a hard shake or use a pen or stick to release it.