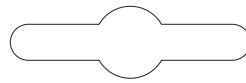


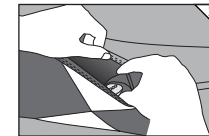
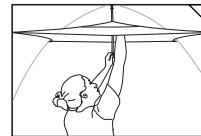
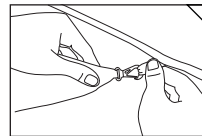
LOSI™/STORM™ ● 2P ● 3P
 ASASHI™ ● ●

Tent Gear Lofts

*Styles Vary By Model



*Patents Pending



NEMO guarantees every product we sell. We put a great effort into choosing the best materials and providing you with the highest level of workmanship. If one of our products does not meet your expectations during its useful life, we promise to repair it, replace it, exchange it, or give you a refund at our discretion.

To learn more, please visit us at:

www.nemoequipment.com

©2010 NEMO Equipment, Inc. All rights reserved. Made in China.

1. To install the Gear Loft, attach the four corner clips to the corresponding webbing loops on the inside of the tent. For Asashi™, also attach the adjustable center clip.

2. Some Gear Loft models use cord-locks to adjust their height. The lowest position is ideal for top storage, while the high position creates more headroom.

3. Some Gear Lofts includes a special pocket for your headlamp with a light-diffusing fabric. Place your head lamp in the LightPocket™ with the light facing towards the inside of the tent to cast an even glow.