





NEMO MISSION

Our 2010 product line is the result of 8 years of devoted labor and half a million years or so of developing better tools for shelter and survival. NEMO is about what we have just discovered and what we have known for a long time. It's about beautiful design and intelligent engineering. It's about serene cloudless days and bitter cold nights spent battling snow drifts and frostbite. It's about bringing two worlds together: the world of design and technology and the actual world where we test ourselves and our inventions. We are pursuing perfection. It is an epic journey, often elusive, demanding youthful energy, creativity, and courage. We have come a long way in our travels and we promise never to yield in our determination. Like our ancestors who explored new places for the first time, we will change the common idea of what is possible.



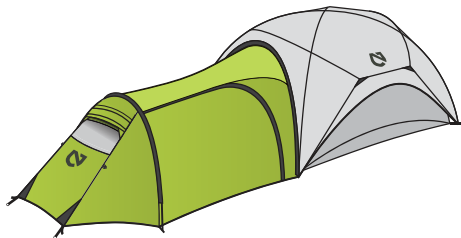
NEMO's spirit is in adventure. Without the beautiful wild places where adventures are made, our spirit dies. We are committed to reducing our environmental impact. Finding the right path forward takes a great deal of research, problem solving and commitment. And finding the right path is only the first challenge, walking that path is the real test. NEMO has been making strides to use more sustainable materials, to repurpose byproducts of manufacturing, and to recycle products at the end of their useful life. We are taking steps for the future of our planet and hope you will do the same. To learn more about NEMO's GRN™ efforts, please visit our website.





ASASHI™ GARAGE™

Increase your gear storage capacity with the Asashi™ Garage™. The cavernous interior can hold it all – a fleet of bikes, climbing gear, snowmobiles, and any other equipment to suit your adventures. A large side door gives easy access, and the tall interior height provides enough space to enjoy the shade while sitting in camping chairs. To convert the Garage™ into an extra sleeping space, add the optional Asashi™ Garage™ Footprint.



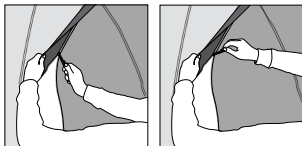
Weight (with poles):	3.6 lbs (1.7 kg)
Frame:	DAC 9.5 mm NSL
Fabric:	30D PU Nylon 75D PU Polyester
Length:	106" (269 cm)
Maximum Width:	84" (213 cm)
Interior Height:	60" (152.4 cm)
Floor Area:	57 sq ft (5.3 sq m)

ASASHI™ GARAGE™
FITS ASASHI™ 4 PERSON TENT

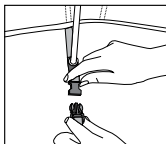


Setup Guide

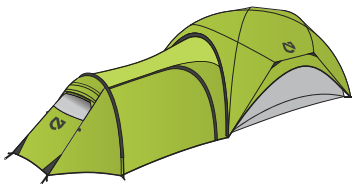
1. Unzip and disconnect the front vestibule of the tent. Note: When facing the tent, the zipper will release the vestibule on the right side. Zip the Garage™ onto the tent fly. Make sure to close the snaps at the end of the zipper. This will prevent the zipper from reopening.



2. Insert the pole into the pole sleeve of the Garage™. Attach the end tips of the pole to the grommets in the tension strap and use the quick release buckles to fix the tension strap in place.



3. Stake the tent and Garage™ in place to create proper tension.



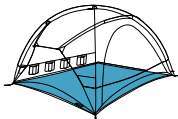


More Asashi™ Accessories

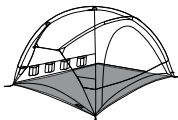
1. **Asashi™ Garage™ Footprint** : The Asashi™ Garage™ Footprint is a 70D abrasion-resistant nylon fabric tarp perfectly sized to fit underneath your Asashi™ Garage™. The fabric is PU-coated for waterproofness. Add the footprint to create more sleeping space, a dry place for your dog to sleep, or protect your gear from mud.



2. **Asashi™ Pawprint™**: The Pawprint™ is a removable liner for the inside of your tent. It has the dual function of protecting your tent floor from boots and paws, and of adding serious comfort. The Pawprint™ is made of a machine-washable brushed fabric that is very soft to the touch. Place your sleeping pads between the Pawprint™ and floor to help them stay in place. With a clean, soft Pawprint™ under you, you might be able to save some weight and travel with a lighter sleeping bag or blanket.



3. **Asashi™ Footprint**: The Asashi™ Footprint is a 70D abrasion-resistant nylon fabric tarp perfectly sized to fit underneath your Asashi™ tent. It reduces wear and tear on your tent floor from contact with the ground. The footprint can also be used with your Asashi™ poles and fly to make a lightweight shelter for fair-weather adventures.



4. **Asashi™ Link™**: Enhance the living space between two Asashi™ tents with the Asashi™ Link™. Whether used as a communal meeting space, a versatile entrance, a sleeping area for pets, or covered storage for your gear, the Asashi™ Link™ is sure to become a favorite accessory for all trips and adventures.





NEMO Quality

There is a reason why our logo resembles a medieval shield. If you've ever seen an authentic medieval shield or piece of armor, the detail and quality of craftsmanship are astonishing. Hours were spent shaping and perfecting every component knowing the gravity of purpose and the need for reliable performance. At NEMO, we take the same approach to quality. We know from our own experience how vital a tent can be for comfort and survival. Your tent is your home in the wilderness and your armor against the elements. We obsess over every design decision to ensure you get the greatest comfort and protection possible. Our process begins with pencil and paper and evolves methodically through computer modeling, prototyping, testing, and development. We use all the latest tools, software, manufacturing methods, and materials. If we aren't happy with what's available, we make our own. We strive to design and build the best tents on the planet. We stand behind our shield, the symbol of NEMO quality.

To learn more, please visit our website at www.nemoequipment.com.

NEMO Warranty

NEMO guarantees every product we sell. We put great effort into choosing the best materials and providing you with the highest level of workmanship. We proudly stand behind everything we make. NEMO products carry a lifetime warranty against defects in workmanship and materials to original owner, with proof of purchase. Warranted products will be replaced or repaired at NEMO's discretion. NEMO does not warranty products against normal wear and tear, unauthorized modifications or alterations, improper use, improper maintenance, misuse or neglect or if the product is used for a purpose for which it is not intended. Except as expressly set forth in these terms and conditions, NEMO is not liable for any direct, indirect or consequential damages arising out of or resulting from the use of a NEMO product. The warranties set forth in these terms and conditions are in lieu of all other warranties, express or implied, including without limitation, implied warranties of merchantability or fitness for a particular purpose.

If you are having a problem with your NEMO product, please visit www.nemoequipment.com/tent-manufacturer-warranty or call NEMO Customer Service at 1-800-997-9301.

We will do our best to see that you are satisfied with your NEMO product. Our goal is to get you back in the outdoors as quickly as we can.

**WARNING**

Never place your stove, campfire, or other flame source in or near your tent. Never cook, light, or refuel a stove or any other heat source inside your tent. Death by suffocation and/or serious burns is possible.

Maintain adequate ventilation inside your tent at all times. Death by suffocation is possible.

Anchor your tent properly at all times to reduce the risk of loss or injury to the tent or occupants.

Carefully consider the possibility of falling rocks or tree limbs, lightning strikes, flash floods, avalanches, strong winds, and other hazards when choosing a campsite to reduce the risk of loss or injury.

If you have additional questions, please contact NEMO Equipment, Inc. directly at 800-997-9301.

NOTE: All 2010 NEMO tents meet the CPAI-84 standard for flame retardancy.



Printed on Recycled Paper



www.nemoequipment.com

©2010 NEMO Equipment, Inc.