

### **NEMO QUALITY**

There is a reason why our logo resembles a medieval shield. If you've ever seen an authentic medieval shield or piece of armor, the detail and quality of craftsmanship are astonishing. Hours were spent shaping and perfecting every component knowing the gravity of purpose and the need for reliable performance. At NEMO, we take the same approach to quality. We know from our own experience how vital a tent can be for comfort and survival. Your tent is your home in the wilderness and your armor against the elements. We obsess over every design decision to ensure you get the greatest comfort and protection possible. Our process begins with pencil and paper and evolves methodically through computer modeling, prototyping, testing and development. We use all the latest tools, software, manufacturing methods and materials. If we aren't happy with what's available we make our own. We strive to design and build the best tents on the planet. We stand behind our shield, the symbol of NEMO quality.

To learn more, please visit our website at [www.nemoequipment.com](http://www.nemoequipment.com).

## TENSHI™

Alpine Warrior.

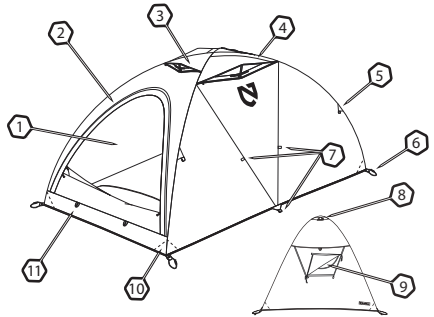
Alpine-style ascents require your gear to be as versatile as your abilities. Tenshi™ is an all-mountain shelter that can be used at base camp with all the comfortable features. Start with a cavernous vestibule, a Removable Insulated Floor (RIF) and a Condensation Curtain™ that traps frost in a small portion of the tent. By the time you get to high camp and strip the tent down to its basics, it weighs only 4.2 lbs and fits on the smallest of ledges. The recipient of several awards, including “Editor’s Choice” from *Climbing*, and “Best In Gear” from *Rock and Ice*, Tenshi™ is the clear choice for high-altitude adventure.

<b>Capacity:</b>	2
<b>Minimum Weight:</b>	4.2 lbs (1.89 kg)
<b>Packed Weight:</b>	6.7 lbs (3.05 kg)
<b>Packed Dimensions:</b>	18" x 7" dia (45.7 x 17.7 cm)
<b>Frame:</b>	2 DAC 8.84 mm Featherlite®
<b>Shell Fabric:</b>	OSMO™ Waterproof Breathable
<b>Fly Fabric:</b>	N/A
<b>Floor Fabric:</b>	70D PU Nylon (10,000 mm)
<b>Floor Dimensions:</b>	86" x 47" (218 x 119 cm)
<b>Interior Height:</b>	42" (107 cm)
<b>Floor Area:</b>	28 sq ft (2.60 sq m)
<b>Vestibule Area:</b>	10 sq ft (0.93 sq m)



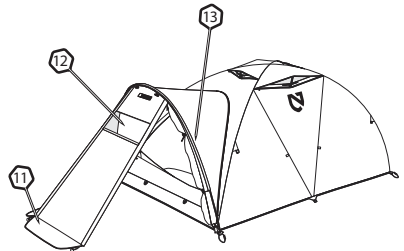
**TENSHI™**  
2 PERSON

## Tenshi™



1. Removable Condensation Curtain™
2. Zipper for Vestibule Attachment
3. Internally Deployable Strutted Vents
4. Pressure Porting™
5. Multiple Guy-Out Points
6. Replaceable Anchors
7. Triangulated Guy-Out Points
8. Sleep Tight Anchor Transfer™ (STAT™) System
9. Rear Window/Escape Hatch with Integral Vent
10. Reinforced Corner Pockets
11. Front Door Tie-Backs

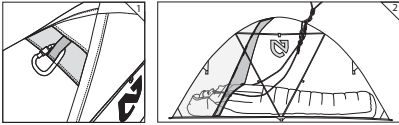
## Tenshi™ with Vestibule



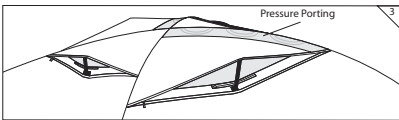
11. Snow Skirt
12. UVX Window
13. Vestibule Door Tie-Backs

## NEMO Innovation

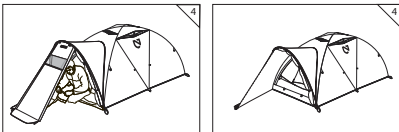
1. **Sleep Tight Anchor Transfer™ (STAT™)**: when you pitch your Tenshi™ on narrow ledges or other high exposure areas, STAT™ provides a waterproof, convenient, and direct method of transferring your anchor into the tent. This reduces the amount of slack in the system without compromising the weatherproofness of the tent.



2. **Condensation Curtain™**: normal breathing will create a good deal of moisture inside your tent. Most will escape through the breathable tent shell, but as with all tents, some moisture may condense on the surface. The Condensation Curtain™ helps keep moisture and frost contained in a small portion of the tent. Use the vents and the front door to keep as much of the moisture moving out of the tent as possible. The curtain also has its own tie-back loop if you want to hold it out of the way.



3. **Venting**: Tenshi™ has three internally deployable overhead vents in addition to a rear window for added air circulation. Pressure Porting™ on the largest two overhead vents help reduce forces on the seams during high winds.

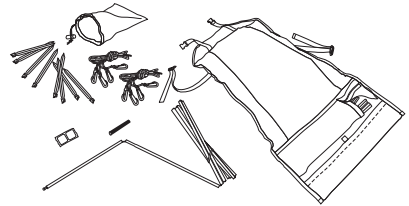


4. **Vestibule**: the full-size included vestibule provides plenty of additional space for gear storage and a dry entry during bad weather. On sunny days, the vestibule is easily removed by unzipping it from the tent. Pile snow or stack ropes over the snow skirt to help keep out the wind.

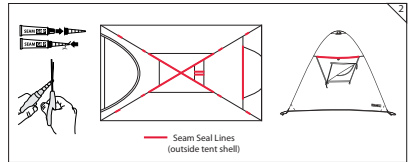


## Tent Setup

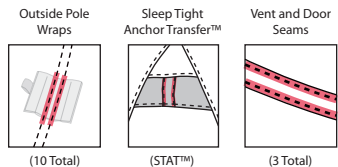
1. Lay out the contents of Tenshi™ and make sure that you received all of the following items: tent, stuff sack, vestibule, Condensation Curtain™, 2 straight poles, 2 curved vestibule pole, 8 stakes, 4 guy lines, Seamgrip® with nozzle, pole repair sleeve, and Tear-Aid™ patches.



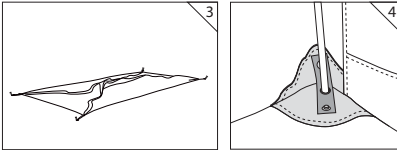
2. **NOTE: TENT IS NOT FULLY WATERPROOF UNTIL IT IS SEAMSEALED.** In some areas of the tent, seams are sewn directly through the tent shell to create a very strong construction. Water can leak through these areas so it is necessary to cover the stitching with Seamgrip®. The Seamgrip® also adds strength so you may choose to apply it to all exterior seams. However, it is only necessary in the areas highlighted below.



To seam seal your tent, first locate the areas highlighted above. These are the locations of pole wraps, the STAT™, the top of rear door, and vent seams. Clean any dirt or moisture off the surface. Carefully squeeze the Seamgrip® through the applicator tip onto the stitching. Use only enough to completely cover the stitching. Be careful not to contaminate zippers and Velcro®. Allow at least 24 hours for curing before use. If the Seamgrip® remains tacky, you can lightly dust the fully cured Seamgrip® with talcum powder.

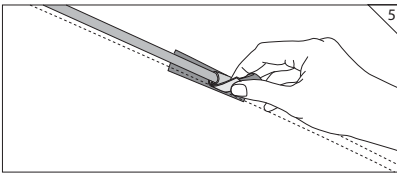


3. When choosing a location to pitch your tent, select a flat area free of fragile undergrowth and sharp objects. Begin the setup of your tent by staking it out. This will help prevent the tent from blowing away.

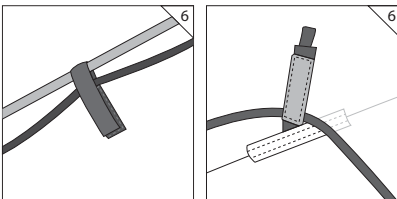


4. The corners of the tent are reinforced and have metal buttons to receive the ends of the poles. Kneel in the doorway of the tent and insert a long DAC pole into one of the far corners. Bend the pole into the tent until the other end of the pole can be brought inside the tent and placed in the nearby diagonal corner. Make sure the pole ends sit in the metal buttons. Repeat with the second pole.

5. With both poles secured in the reinforced corners, use the Velcro® wraps to attach the poles along the inside of the tent shell. Use the pull tabs on the Velcro® to make wrapping and unwrapping easier.

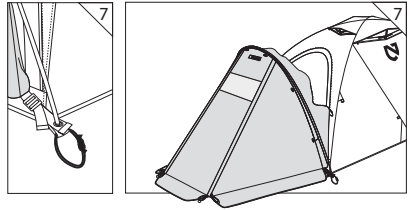


6. Attach the Condensation Curtain™ by first securing the snaps in the front corners, near the door of your tent, and snaps where the poles intersect. Moving up the pole, attach each tab around the pole and secure it to itself. Finally, attach the Condensation Curtain™ to the two Velcro® tabs along the edge of the floor.



## Tent Setup (Continued)

7. To set up the optional vestibule, insert the pre-bent pole into the vestibule pole sleeve. Place each pole tip in the grommet at the end of the vestibule and front corners of Tenshi™. Zip the vestibule to the tent. Stake out the corners of the vestibule. Adjust the webbing straps on each anchor to create an even tension throughout the entire tent.



8. In extreme weather, attach the supplied guy lines to the reflective guy-out loops and stake in place. You can also pile snow or climbing ropes on the snow skirt to help keep out the wind. Do not use sharp objects like rocks as these may tear the fabric.

## Accessories (Sold Separately)

### Removable Insulated Floor (RIF)

To install the Tenshi™ Removable Insulated Floor (RIF), slide the RIF into Tenshi™ with the shiny sil-nylon side down and the orange corner up. Place the tent poles through the corner grommets. The RIF fits perfectly inside the tent and eliminates cold spots when sleeping.



---

## Tips for Extending the Life of Your Tent

---

- △ Avoid rough ground, especially rocks and pavement.
- △ Make sure the tent is clean and dry before packing.
- △ Store the tent unpacked to allow air circulation.
- △ Occasionally inspect the tent for wear and tear.
- △ Do not store the tent exposed to UV light.

---

## Fabric

---

- △ “My tent has a mildew smell.”

Always pack and store your tent dry! Mildew is not only smelly and bad for the tent materials, it is also unhealthy. Contact Rainy Pass Repair (see **NEMO Repair** section) for advice about safely removing mildew.

- △ “I sliced my tent while digging it out during a storm”

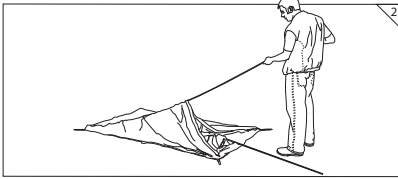
Damaging tents while shoveling them out on big mountains is a common problem. Take care when using sharp tools near your tent! Remember that your tent is your home in the mountains and it's made of lightweight fabric. Shovel most of the snow away and shake the rest off the tent or cover your shovel with a stuff sack or length of tape to protect the tent fabric from the shovel's sharp edges. Small tears can be reinforced with Seamgrip®. Larger areas can be hand-stitched and sealed with Seamgrip®, or you can send your tent to Rainy Pass for repair (see **NEMO Repair** section).

---

## Tent Take Down

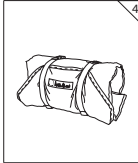
---

1. To take down Tenshi™, first remove all the gear (including the vestibule, Condensation Curtain™, and RIF) and as much moisture as possible. Water will add weight to your pack and can lead to mildew.



2. If the pole wraps are stuck to the poles, it may be necessary to detach them before removing the poles. Pull the poles straight out. If the pole sections have frozen together, simply warm them in your gloved hand for a minute or two and they should separate easily.

3. With your foot on the accessory pocket of the stuff sack, stuff the tent and fly into the large mesh pocket.



4. Place the poles inside the pole pocket, and roll up the stuff sack, securing it with the compression straps. The Tenshi™ stuff sack also works very well as a hanging drying bag when you are in camp.

5. Remember to leave no trace even in winter. Before leaving your campsite take a thorough look around making sure you have not left anything behind, out of place, or damaged.

---

## Storage

---

Remember to dry your tent completely before storing as moisture can lead to mildew. Also try to remove as much dirt and debris from your tent as possible. Avoid storing your tent compressed or exposed to UV light for long periods.



---

## Seam Sealing

---

△ “I woke up in a puddle!”

Did you seam seal your tent? There are many places on the outside of Tenshi™ where we chose to stitch through the waterproof tent shell in order to provide maximum strength. It is necessary to seam seal these areas to make the tent watertight. Please see the **Tent Setup** section for details on the necessary areas to seam seal. Seamgrip® can be used on all exterior sewn seams if you choose. It adds strength in addition to waterproofness. Allow to dry overnight. Note that Seamgrip® can stick to itself even after curing, so it is best to lightly dust fully cured areas with talcum powder. Please visit [www.mcnett.com](http://www.mcnett.com) for more information.

---

## Poles

---

△ “My tent was caught in an avalanche and one of the poles was broken”

The best way to fix a broken pole is with the repair sleeve that came with your tent. If the pole is cracked or broken cleanly, the repair sleeve should slide in place over the damaged area. If the pole is bent or has a burr around the break, it may be necessary to cut or file the damaged area. A temporary fix may be possible by taping another pole or extra tent stake alongside the damaged area. Contact NEMO to order replacement poles.



---

## NEMO Repair

---

If you have any problems with a NEMO product, please contact Rainy Pass Repair, Inc., the industry leader in outdoor product care, for repair or replacement. If you have any questions regarding warranty and repair, or if you need to send a product in for service, please call Rainy Pass. It is not necessary to clean the item before sending, but it will be appreciated if you remove any excessive soiling. Rainy Pass will be happy to give you advice about safely cleaning your product. Please provide the following when you send a NEMO product to Rainy Pass:

- △ A note with your name, phone number, address, e-mail and problem description. A repair form can be downloaded at:  
[www.nemoequipment.com/pdf/NEMO\\_repairform.pdf](http://www.nemoequipment.com/pdf/NEMO_repairform.pdf)
- △ Mark all damaged areas on the product with masking tape.
- △ Pack the product in a sturdy cardboard box with plenty of room. If possible, use the original box to reduce waste.

Ship to:  
Rainy Pass Repair, Inc.  
4415 Stone Way North  
Seattle, WA 98103

To contact Rainy Pass:  
Phone: 1.888.747.7867  
Email: [repair@rainypass.com](mailto:repair@rainypass.com)  
[www.rainypass.com](http://www.rainypass.com)

---

## NEMO Warranty

---

NEMO guarantees every product we sell. We put great effort into choosing the best materials and providing you with the highest level of workmanship. If one of our products does not meet your expectations during its useful life, we promise to repair it, replace it, exchange it, or give you a refund at our discretion. NEMO does not warranty products against normal wear and tear, unauthorized modifications or alterations, improper use, improper maintenance, misuse or neglect or if the product is used for a purpose for which it is not intended. Except as expressly set forth in these terms and conditions, NEMO is not liable for any direct, indirect or consequential damages arising out of or resulting from the use of a NEMO product. The warranties set forth in these terms and conditions are in lieu of all other warranties, express or implied, including without limitation, implied warranties of merchantability or fitness for a particular purpose.



## NEMO Green

Our spirit is in adventure. Without the beautiful wild places where adventures are made, our spirit dies. Please join us in protecting the planet and preserving the places where our spirit thrives.

NEMO is a small company but even small companies and individuals can make a difference. Here are some of the green efforts we are currently making:

>We are incorporating sustainability into our product designs with innovations like our 90% recycled/recyclable Nano OZ™ tent, bamboo tent poles and our Ditto™ reusable tote bag made from old tent samples.

>As of 2008, all of our aluminum poles from DAC use a more environmentally friendly anodization process that avoids the use of toxic heavy metals. These poles are also recyclable.

>In 2006 we stopped using PVC in all of our products.

>All of our business partners domestically and overseas run responsible businesses with good working conditions and respect for the environment.

>NEMO employees get one day off every month to pursue a green effort or volunteer with a community organization.

>In 2008, NEMO adopted the northern end of Jenness Beach in North Hampton, NH (a favorite surf spot of many NEMO employees) through the Blue Ocean Society. The adoption enables NEMO to keep the beach clean throughout the year and also track the types of debris to determine whether the trash is ocean-based or land-based.





>NEMO donates to many groups such as the Access Fund and the National Wildlife Federation to help preserve the natural places we cherish. We have also donated tents to help with disaster relief, including donating over 150 winter mountaineering tents to Pakistan in 2005 following the earthquake in Kashmir.

>NEMO provides discounts and donates tents to college outing clubs to encourage students to get outdoors and foster a love for the environment.

>We recycle everything possible in our shop, including re-using packaging materials and we encourage our manufacturing partners to do the same.

>We do as much of our printing as possible on recycled paper with environmentally-friendly inks.



<p>Never place your stove, campfire, or other flame source in or near your tent. Never cook, light, or refuel a stove or any other heat source inside your tent. Death by suffocation and/or serious burns is possible.</p>	<p>Maintain adequate ventilation inside your tent at all times. Death by suffocation is possible.</p>	<p>Anchor your tent properly at all times to reduce the risk of loss or injury to the tent or occupants.</p>	<p>Carefully consider the possibility of falling rocks or tree limbs, lightning strikes, flash floods, avalanches, strong winds, and other hazards when choosing a campsite to reduce the risk of loss or injury.</p>
<p><b>NO FIRE</b></p> 	<p><b>VENTILATION</b></p> 	<p><b>ANCHOR</b></p> 	<p><b>CAMPSITE</b></p> 



## WARNING

If you have additional questions, please contact  
NEMO Equipment, Inc. directly at 800-997-9301  
[www.nemoequipment.com](http://www.nemoequipment.com)

NOTE: All 2009 NEMO tents meet the CPAI-84 standard for flame retardancy.

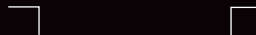
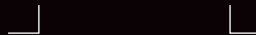


### NEMO MISSION

Our 2008 product line is the result of 6 years of devoted labor and half a million years or so of developing better tools for shelter and survival. NEMO is about what we have just discovered and what we have known for a long time. It's about beautiful design and intelligent engineering. It's about serene cloudless days and bitter cold nights spent battling snow drifts and frostbite. It's about bringing two worlds together: the world of design and technology and the actual world where we test ourselves and our inventions. We are pursuing perfection. It is an epic journey, often elusive, demanding youthful energy, creativity and courage. We have come a long way in our travels and we promise never to yield in our determination. Like our ancestors who explored new places for the first time, we will change the common idea of what is possible.

Please visit us at: [www.nemoequipment.com](http://www.nemoequipment.com)

NEMO EQUIPMENT, INC.  
100 FACTORY ST, NASHUA, NH 03060  
P: 800-997-9301 F: 603-881-9358



Printed on Recycled Paper



[www.nemoequipment.com](http://www.nemoequipment.com)

©2009 NEMO Equipment, Inc.