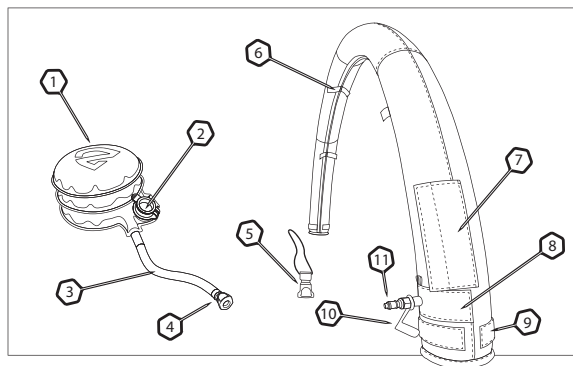
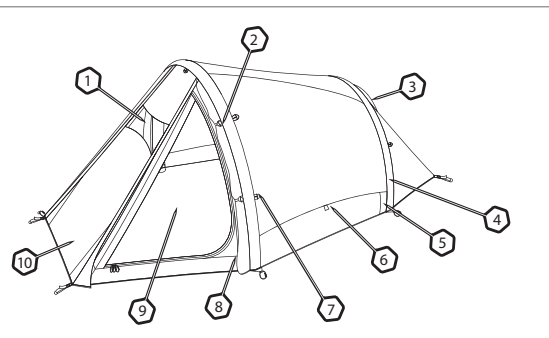




MORPHO AR™



©2007 NEMO Equipment, Inc.



Morpho AR™

OVERVIEW

1. PU Weather Check Window
2. Door Tie-backs
3. Rear Scoop Style Vent
4. Removable Internal Airbeams
5. Rear Pump Access Zipper
6. Internally Deployable Side Vent
7. Multiple Guy-out Points
8. Front Pump Access Zipper
9. Mesh Door With Two Entry Options
10. ExoFly™ Retractable Vestibule

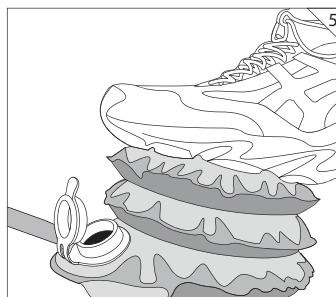
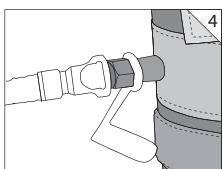
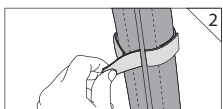
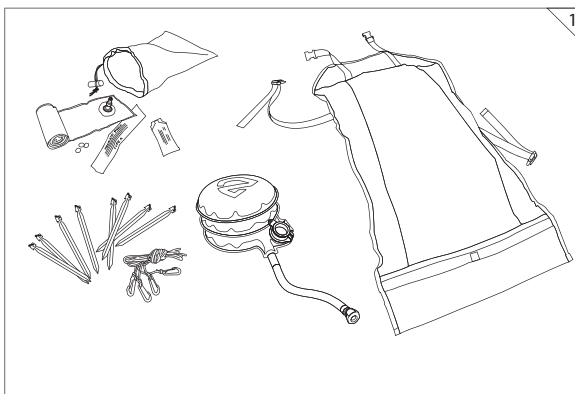
Integrated Pump and Airbeam

1. Nemoid™ Foot Pump Body
2. Dump-Check Valve™
3. Neoprene hose
4. Quick-Disconnect Valve
5. Deflator Cap
6. Velcro Straps for Attachment Inside Tent Shell
7. Bladder Access Pocket
8. Hypalon® Valve Reinforcement
9. Velcro Panels for Securing Airbeam Ends
10. Protective Cap for Valve
11. Quick-Disconnect Inflate/Deflate Valve

www.nemoequipment.com

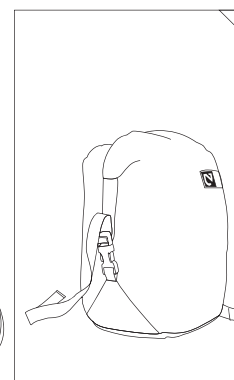
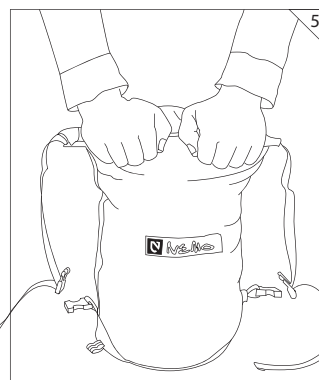
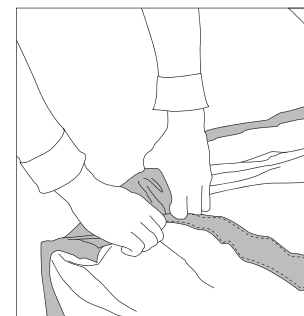
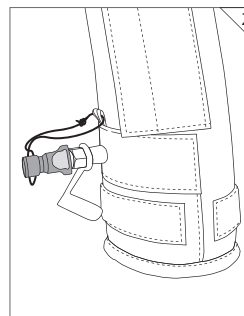
NEMO EQUIPMENT INC.
 100 Factory Street, Nashua, NH 03060
 Phone: 1-800-997-9301
 E-mail: journey@nemoequipment.com

*Patents Pending



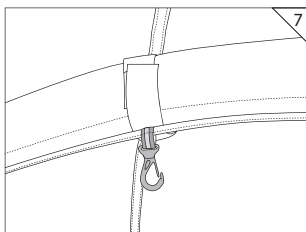
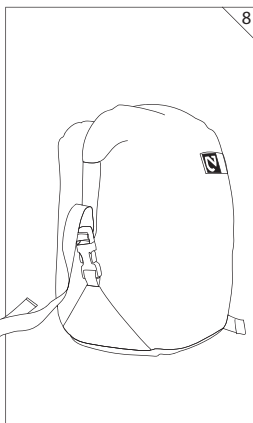
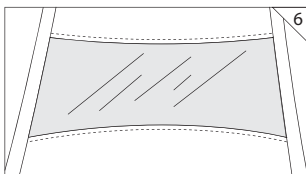
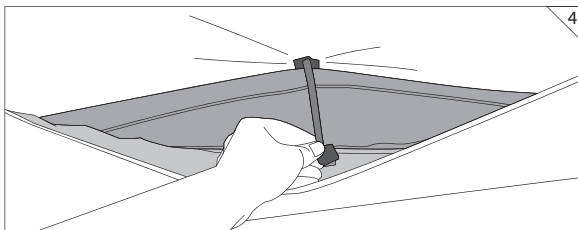
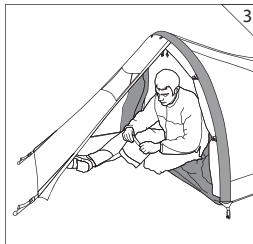
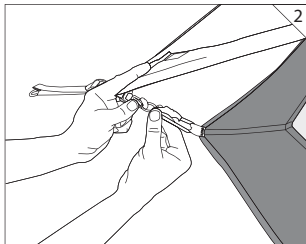
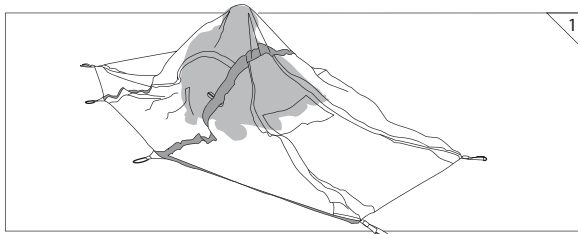
SET UP

- 1 Lay out the contents of Morpho AR™ and make sure you received your tent and the following: stuff sack, Nemoid™ Foot Pump, 2 replacement bladders with inflate/deflate valve, 8 stakes, guy lines, and repair kit. Also confirm that you received any optional items you may have ordered including: Footprint, T-shirts, or accessories.
- 2 The first time you set up Morpho AR™, you will need to attach the airbeams. Making sure the long beam is in front and the short beam is in the rear of the tent, line up and attach the Velcro straps on airbeams to the tent. This can be done with beams inflated or deflated. Adjust the Velcro so there is no puckering of the tent shell. **Keep your airbeams attached to the tent to save setup time in the future.**
- 3 In a flat area, begin the setup of your tent by staking it out.
- 4 Disconnect the deflator cap and connect your Nemoid™ Foot Pump to one of the airbeams. When properly connected, the quick-disconnect fittings will make an audible click. When inflating from outside the tent, pass the end of the pump through the pump access zippers.
- 5 Step on pump body repeatedly until it becomes difficult to add air. Disconnect pump and repeat process with second airbeam.



TAKE DOWN

- 1 To take Morpho AR™ down, first remove all gear and as much moisture as possible. Water will add weight to your pack and can lead to mildew.
- 2 Begin by placing the deflator caps on the inflate/deflate valves. When properly connected, there will be an audible click. The airbeams will immediately begin to deflate.
- 3 Roll the tent along the airbeams towards their valves to force out all the air. Try to clean as much dirt and debris from your tent as possible before packing it. This will help preserve the breathability of the tent fabrics and reduce overall wear and tear.
- 4 Stuff the tent entirely into the stuff sack. By starting with the back end of Morpho AR™ you will avoid trapping air in your stuff sack.
- 5 Fold the top edge of the stuff sack down several times to make an air-tight seal. Allow excess air to escape while compressing. Secure the stuff sack with the compression straps on both sides.
- 6 Remember to leave no trace. Before leaving your campsite take a thorough look around making sure you have not left anything behind, out of place, or damaged.



FEATURES

1 In poor weather, Morpho AR™ can be inflated entirely from the inside. After staking out the corners, get inside and take your time pumping up the airbeams while staying dry. Remember to close all zippers to stay completely dry.

2 The ExoFly™ is a unique morphing vestibule that gives you the option of a full vestibule to stash wet and muddy gear or expands to provide maximum sleeping room. Unclip the inner tent near the front stakes, and retract to create as much space as you need. You can clip and unclip from inside the tent by opening the front mesh zipper. **WARNING:** do not cook in or near your tent. This can lead to burns or suffocation.

3 With doors that can be fastened back, the front vestibule creates great open-air protection in the rain and allows a dry entry.

4 The dual side vents on Morpho AR™ offer additional side to side ventilation. Attach the Velcro at end of the strut to Velcro on the side of the tent to deploy the vents from inside the tent. These vents will add extra ventilation in a rainstorm while still protecting the inside of the tent.

5 On sunny days, roll back all of the doors of ExoFly™ to expose as much mesh ventilation as possible. To tie doors back, put the cord locks through their respective reflective webbing loop and pull the cord lock tight. For privacy or shade, you can choose which doors to tie back or leave open. The vent at the rear of the tent completes the ventilation system that ensures a maximum cross breeze.

6 You can peek out the front window of Morpho AR™ to get the weather report, or on clear nights, enjoy star gazing from inside the tent.

7 Use the hook hanging from the center of the airbeam to clip your head lamp for a convenient overhead light, or run a line between the two hooks to create an indoor clothes line.

8 Your Morpho AR™ stuff sack also works very well as a dry bag for other gear when your tent is not inside. The bag is waterproof and the side reinforcement allows you to really pack things in tight.

CARE & FIELD REPAIR

Tips for Extending the Life of Your Tent

- △ Avoid rough ground, especially rocks and pavement.
- △ Make sure the tent is clean and dry before packing.
- △ Store the tent unpacked to allow air circulation.
- △ Occasionally inspect the tent for wear and tear.
- △ Don't store the tent exposed to UV light.
- △ Do not store Nemoid™ Foot Pump compressed.

Repairing Bladders:

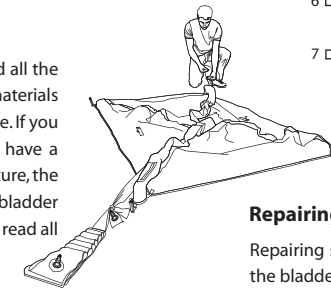
NEMO AirSupported™ tents are designed to withstand all the usual rigors of adventure. We worked hard to select materials with the right balance of being lightweight and durable. If you take reasonable care of your tent, you should never have a problem. But, accidents do happen! If you have a puncture, the next few steps will show you how to swap in a new bladder and repair the damaged one to keep as a spare. Please read all the steps first before beginning.

Exchanging Bladders

! Never open access pockets when airbeam is inflated.

- 1 △ Connect deflator to completely deflate the punctured airbeam.
- 2 △ Open bladder access pockets. If the puncture is reachable, skip to **Repairing Bladder Punctures** for TEAR-AID™ instructions.

- 3 △ To swap in a new bladder, push the valve back through its Hypalon® hole. A small amount of force may be needed. Be careful not to tear the airbeam.
- 4 △ Tie the new bladder to the end of the old bladder. **It is important as you pull the new bladder through that it does not twist.** To minimize twists, it may help to lay out the new bladder flat on the ground with the valve oriented the right direction. Make sure to use a long bladder when fixing the long airbeam.
- 5 △ Pull the new bladder through and untie the old bladder.
 - 6 △ Once the valve is pushed back through its Hypalon® hole and the **access pockets have been closed**, re-inflate.
 - 7 △ Any twists in the bladder will result in kinks in the airbeam when you re-inflate. This will require repeating this entire process, so it is best to take your time and be sure the bladder is fed into the tent with the valve oriented in the right direction, without any twists.



Repairing Bladder Punctures:

Repairing small holes in a NEMO bladder is simple. If necessary, inflate the bladder underwater to locate the puncture.

- 1 △ Make sure the area is dry and clean
- 2 △ Cover the hole with a generous piece of the self-adhesive patch (TEAR-AID™) included in your repair kit.

If the damage is larger than 1/8" in length or diameter, the repair may not be reliable. Replacement bladders are available from your NEMO retailer or from www.nemoequipment.com.

REPAIR

If you have any problems with a NEMO product, please contact Rainy Pass Repair, Inc., the industry leader in outdoor product care for repair or replacement. If you have any questions regarding warranty and repair, or if you need to send a product in for service, please call Rainy Pass. It is not necessary to clean the item before sending, but it will be appreciated if you remove any excessive soiling. Rainy Pass will be happy to give you advice about safely cleaning your product. Please provide the following when you send a NEMO product to Rainy Pass:

- △ A note with your name, phone number, address, e-mail and problem description. A repair form can be downloaded at: www.nemoequipment.com/pdf/NEMO_repairform.pdf
- △ Please remove all of your personal items and mark all damaged areas on the product with masking tape.
- △ Pack the product in a sturdy cardboard box with plenty of room. If possible, use the original box to reduce waste.

Ship to:
 Rainy Pass Repair, Inc.
 5307 Roosevelt Way, NE
 Seattle, WA 98105

To contact Rainy Pass:
 Phone: 1 (888) 747-7867
 Email: repair@rainypass.com
www.rainypass.com

If you live in the Seattle area, you can call Rainy Pass locally at (206) 523-8135 and visit their shop during the following hours: M,T,W,F 9am-6pm and Th 9am-7pm.

WARRANTY

NEMO guarantees every product we sell. We put a great effort into choosing the best materials and providing you with the highest level of workmanship. If one of our products does not meet your expectations during its useful life, we promise to repair it, replace it, exchange it, or give you a refund at our discretion. NEMO does not warranty products against normal wear and tear, unauthorized modifications or alterations, improper use, improper maintenance, misuse or neglect or if the product is used for a purpose for which it is not intended. Except as expressly set forth in these terms and conditions, NEMO is not liable for any direct, indirect or consequential damages arising out of or resulting from the use of a NEMO product. The warranties set forth in these terms and conditions are in lieu of all other warranties, express or implied, including without limitation, implied warranties of merchantability or fitness for a particular purpose.

! WARNINGS

- Keep tent away from open flames or smoldering camp fires
- Maintain adequate ventilation inside tent
- Avoid campsites with danger of falling rocks or tree limbs, lightning strikes, flash floods, avalanches or other hazards
- In extreme weather make sure all stakes and guy-outs are secure
- Do not store food inside of tent
- Store tent in a dark, dry area away from UV light